

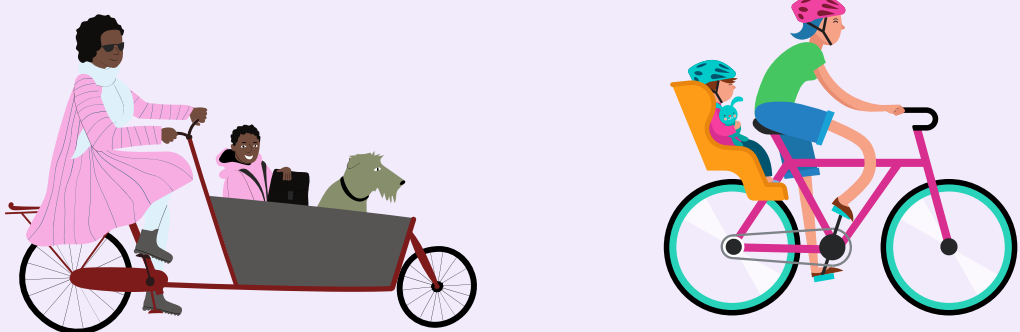
TOOL FOR THE EVALUATION OF PUBLIC TRANSPORT WITH A GENDER PERSPECTIVE



1. Problem



Latin American cities, with accelerated economic growth and urbanization, face the challenge of guaranteeing the expansion of transportation networks in an inclusive and sustainable manner, considering the gender approach in the planning and implementation of projects, as well as the intersectionality of social realities.



Mobility solutions have been planned and designed based on male dynamics, forgetting the differentiated needs of diverse women and people who require accompaniment, where mobility patterns do not respond to those traditionally proposed for the planning of services.

3. What are we going to evaluate from a gender perspective?

Heavy and collective public transportation projects, from the planning stage to the monitoring of their operation, through the following categories:

- Gender-based violence
- Accessibility and quality of infrastructure
- Labor participation
- Mobility of care
- Regulation and policies



2. What are the benefits of the assessment tool?

The tool identifies areas of opportunity to ensure women's access, comfort and safety on public transport. In this way, both service providers and authorities can better manage their resources and foster gender equality, promoting safer, more accessible public transportation adapted to different mobility patterns. Some of the benefits obtained are:



- Visibilize gender gaps
- Generate inputs to design and implement actions to improve the quality of life, mainly for women and their dependents.
- Follow up on public transportation services to measure the impact of actions over time and reformulate them if necessary.

4. Considerations and scope of the tool

The tool allows authorities and public transport service providers in Latin American cities to evaluate their progress in gender mainstreaming through a checklist that offers a quick diagnosis, as well as a list of indicators that serve as a guide to orient efforts and continue advancing in the improvement of the service.



5. Results of the pilot test

Thanks to the participation of the Secretariat of Mobility of Cali, as well as MetroCali, it was possible to observe progress in the inclusion of the gender perspective in the operation of the transportation service.



This tool also identified the need to generate inter-institutional linkage mechanisms, as well as some regulatory adjustments, in order to guarantee the mainstreaming of the gender perspective throughout the public policy cycle of a mass and collective public transportation project.